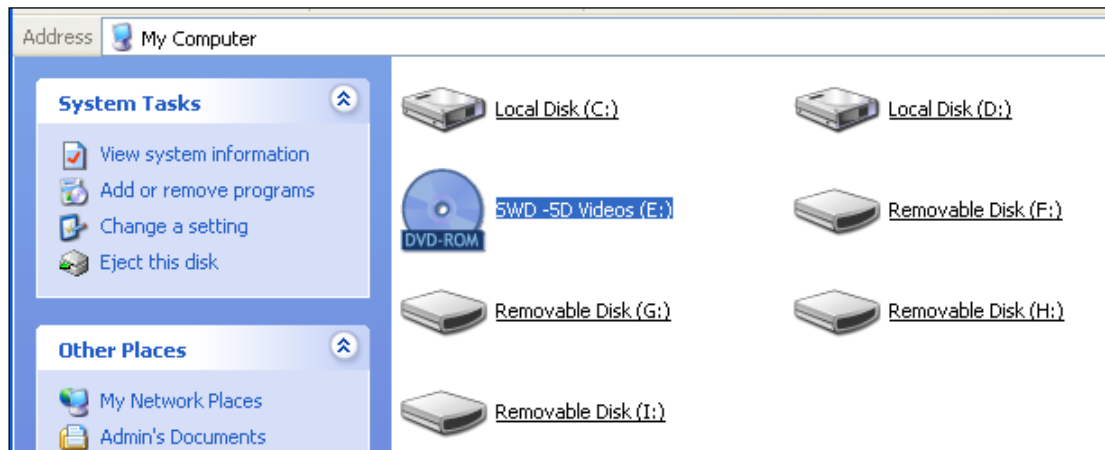
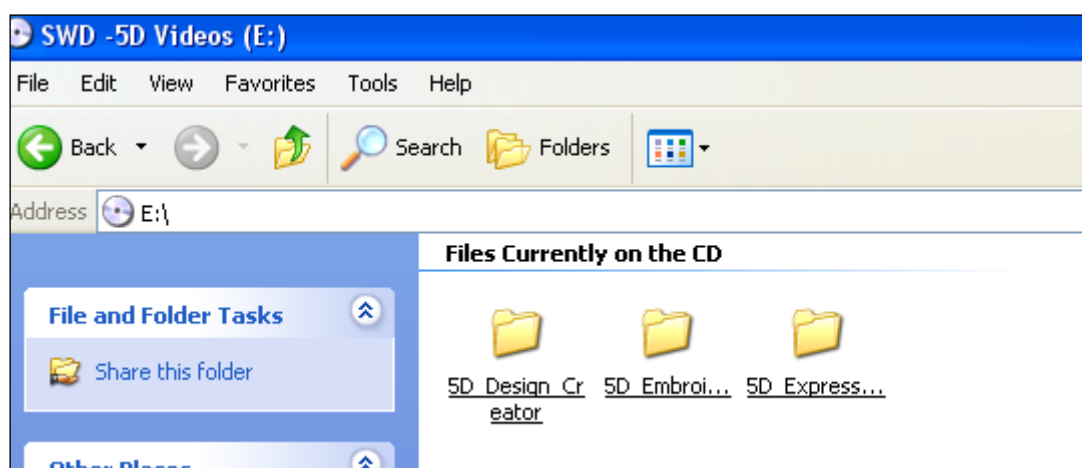


## Using Windows XP or Vista

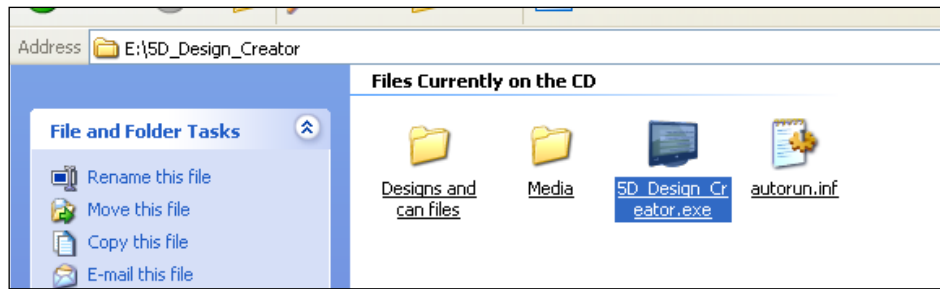
This dvd is made to run on a computer so just place it in your disk drive and navigate to My Computer where you will see the DVD-ROM showing SWD 5D Videos.




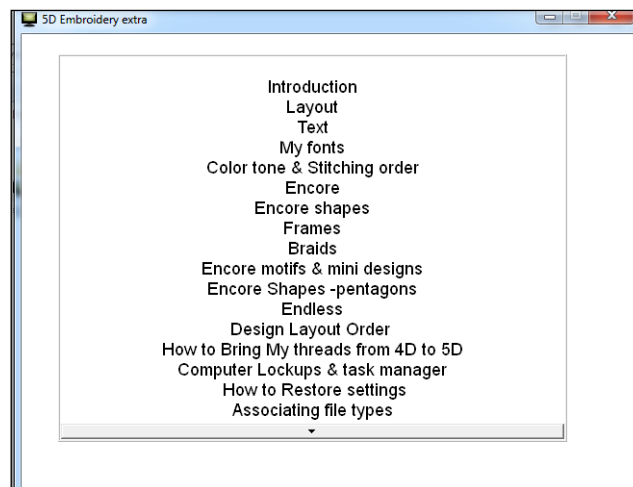
- If you have just purchased a single DVD then it should run automatically as the autorun file should action. You may be asked if this is OK and you should say yes to that prompt. You should then see the Menu for that DVD. For help using the menu see below.
- If you have purchased multiple DVD's then they will be in folders and the autorun will be disabled.
- Click on the 5D Videos . When you open this up you will see that there are one or more folders on the disk



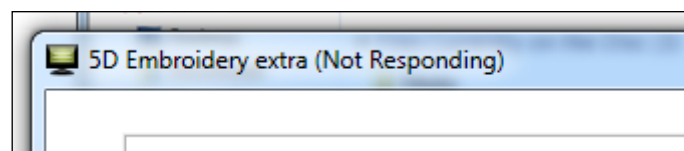
- If you click on one of the folders it wil open and reveal the files that make up the DVD you have purchased. You will have a folder called Media , an application and an autorun file.



- If you double click on the Menu icon  The menu will open and you will see the links to the various clips that make up your DVD. You may be asked if this is to be allowed, just Ok this prompt.



- Depending on the speed and age of your computer you may see this response.



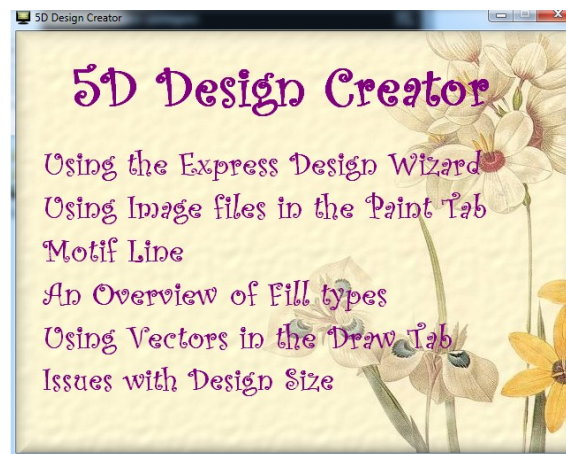
- Do not be too concerned as it may take your computer a short while to install the necessary information to run the videos. In a few minutes it should be OK.



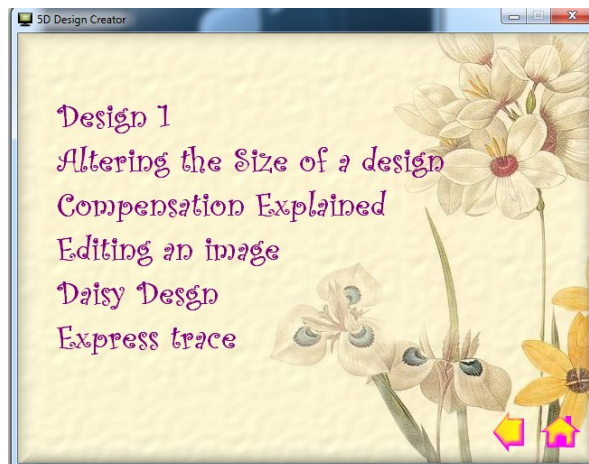
- However if this is what you see, sound and no vision then your computer cannot display the video files. My files are much larger than anything you would see on You Tube. I suggest that first you update your Windows Media Player and see if this fixes your problem. An alternative is to download Real Player and use this instead of Windos Media Player.

## **Nested Menus.**

Many of my DVD's have nested menus. So the first menu that you see is the main or Home menu.



In 5D Design Creator if you click on the first title "Using the Express Design Wizard" You will then be shown a secon menu on this topic.



The second menu has two small icons at the bottom right to return to the previous menu( like a back button) or it has a Home or main menu link on the right. I try not to nest too many menus so usually these two icons will have the same result.